

Using CoSign with Adobe LiveCycle ES2

Technical Note No. 37

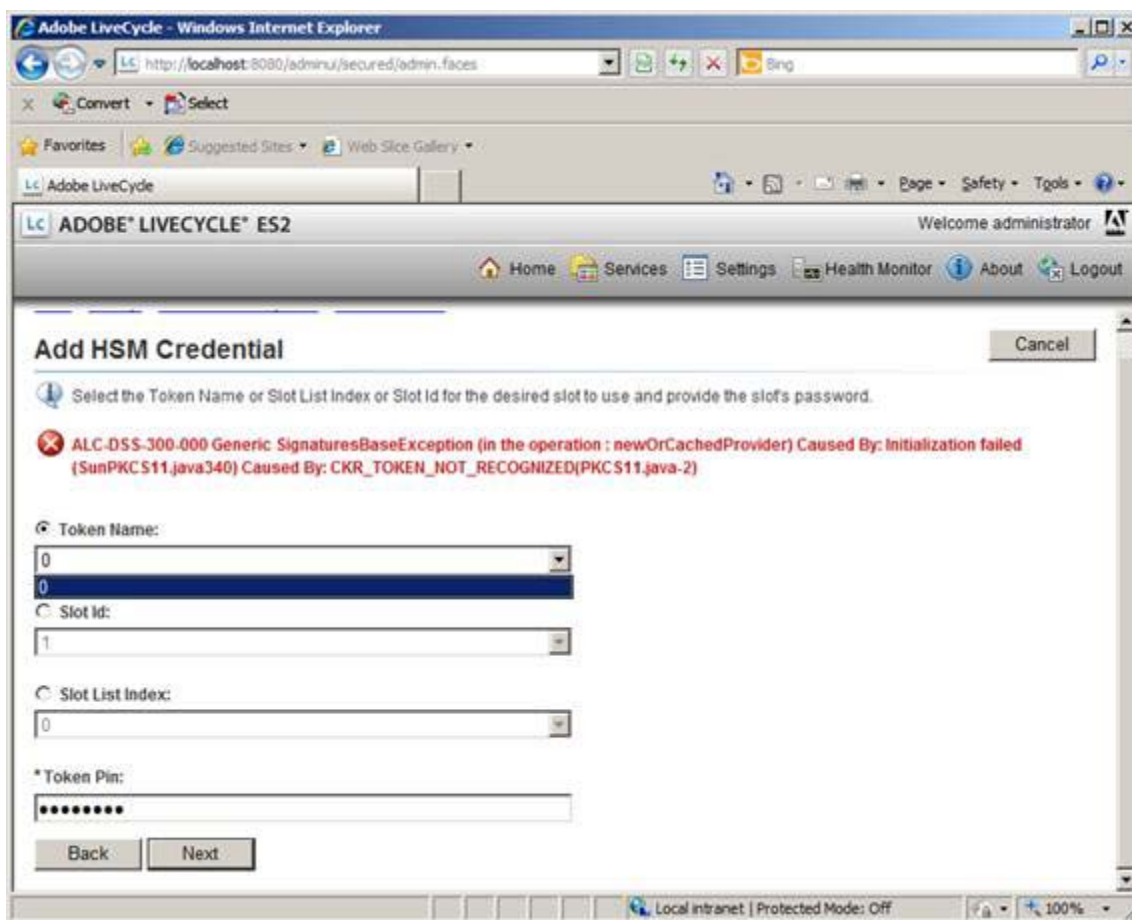
November 21, 2011

» Product

Adobe LiveCycle ES2

» Description

Adobe LiveCycle ES2 is a Java-based server application. One of its features, Digital Signature, uses PKCS#11 interface to perform batch signing of PDF documents. Out the box, CoSign will not work with Adobe LiveCycle ES2. Although LiveCycle ES2 can detect our PKCS#11 library (sadaptor.dll), attempts to log in will produce an error message that looks like this:





» Resolution

Please contact ARX Support by filling in our form at:

<http://www.arx.com/support/supportRequest.php>. Or email us at support@arx.com.

In your message to us, please specify that you encountered an issue using CoSign with Adobe LiveCycle ES2.